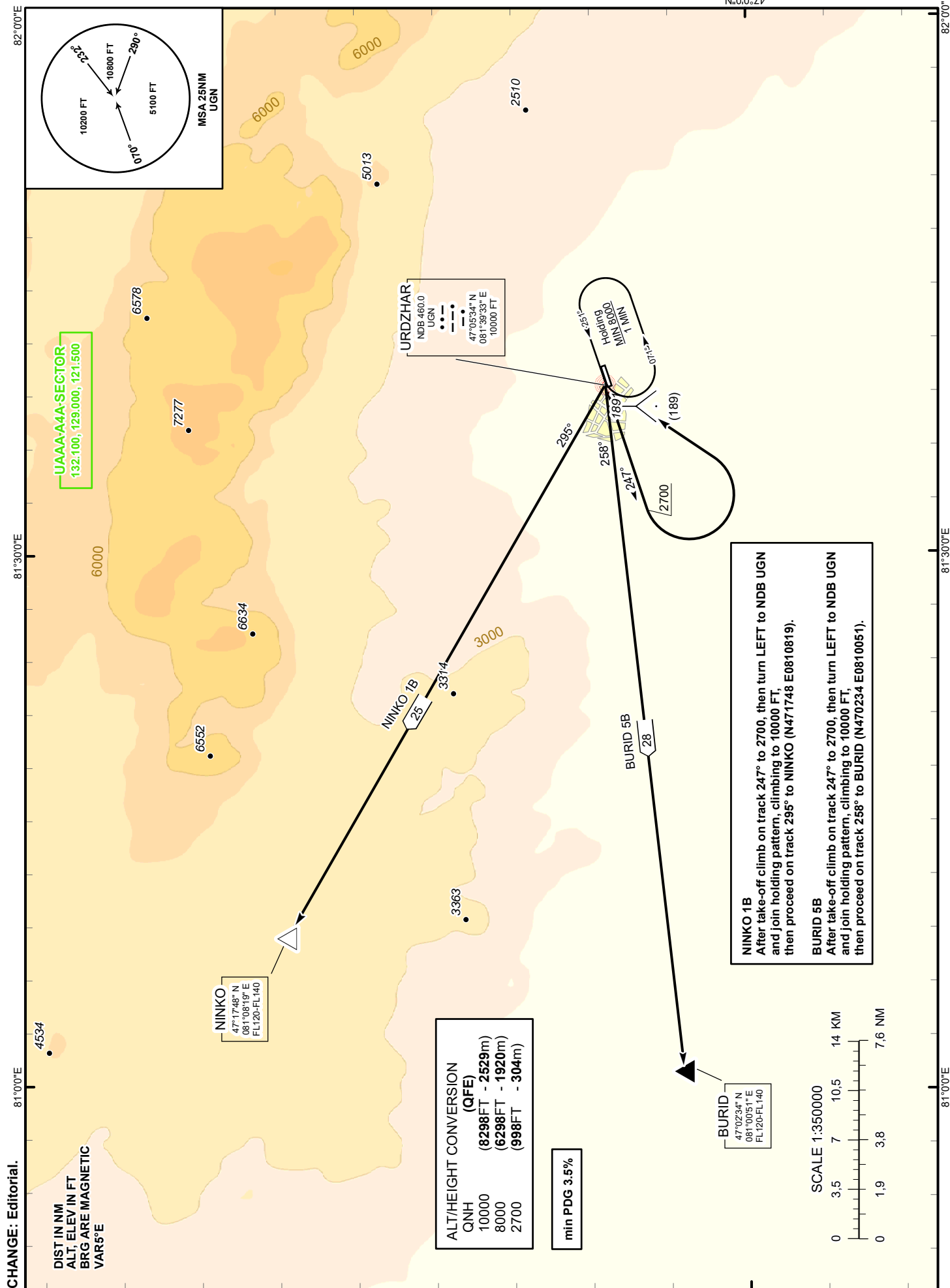


STANDARD DEPARTURE  
CHART - INSTRUMENT  
(SID) - ICAOTRANSITION ALTITUDE  
10000 FT

URDZHAR TOWER 123.0

URDZHAR  
RWY 25  
BURID 5B, NINKO 1B

THIS PAGE INTENTIONALLY LEFT BLANK